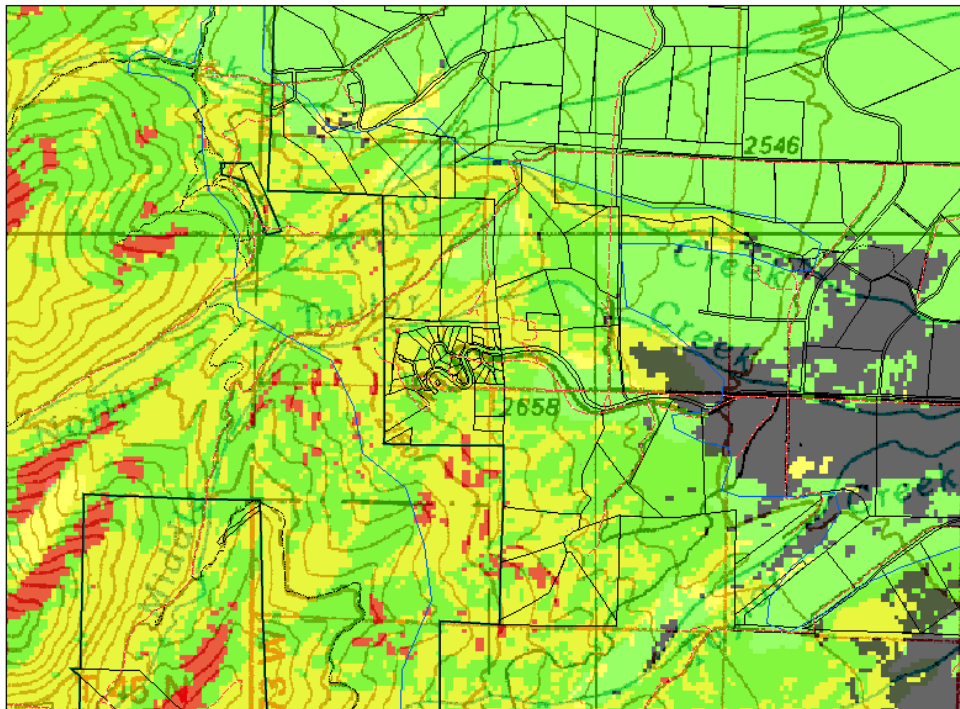


**#4. Taylor Creek aerial photo**

Taylor Density Area vicinity --- FIRE MODEL



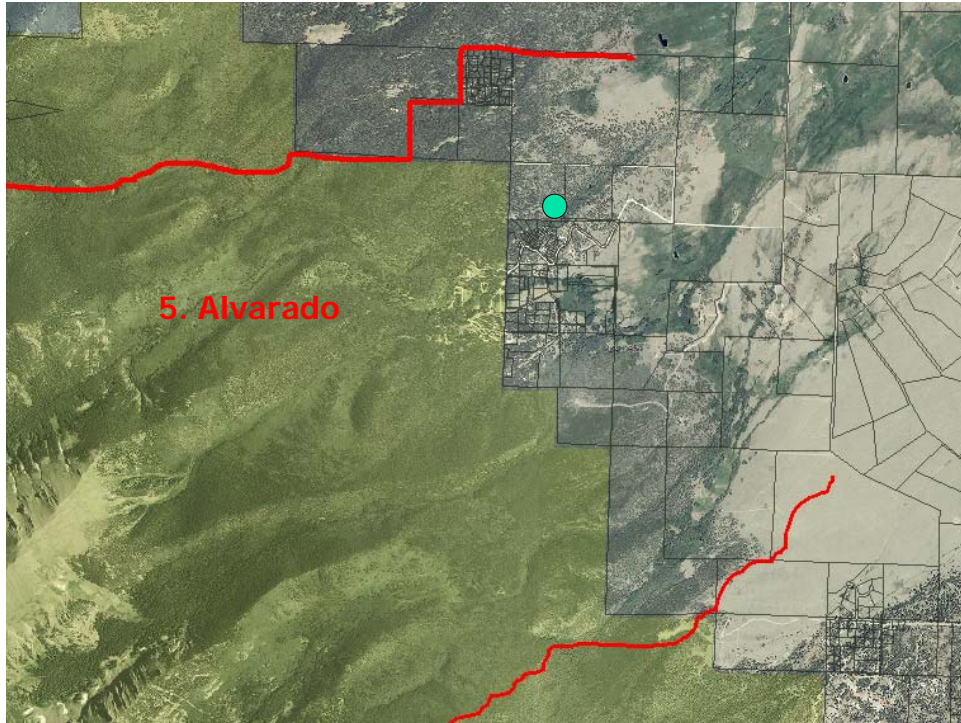
#### 4a. Taylor Density Area



**#4. Taylor Density Area is focused on the former ski area, and has a large lodge and conference center of high community value as well as small-lot residential areas. Dense forest obscures most homes in the photo, indicating extreme need for defensible space and fuel reduction.**

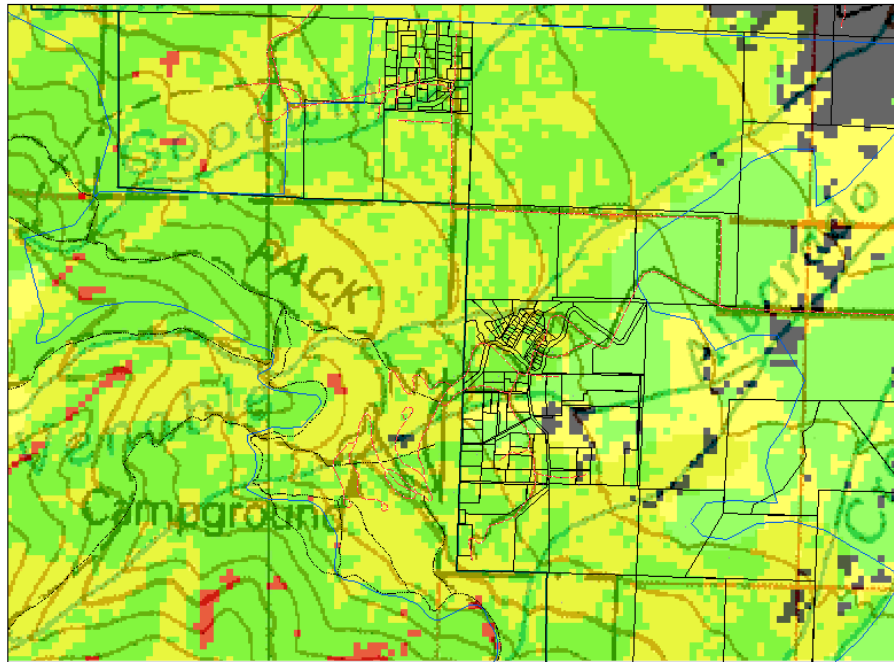
**Loop road system is very limited, and escape routes need development to the north (Hermit Road) and to the south (Taylor Highlands lots, Walker Ranch, Puls property and possibly out through Tanglewood subdivision.) Interspersed and adjacent meadows form good fuelbreaks and escape zones. Fire-fighting water sources are developed at the lodge and the recreational ponds on Muddy Lane.**





**#5. Alvarado aerial photo**

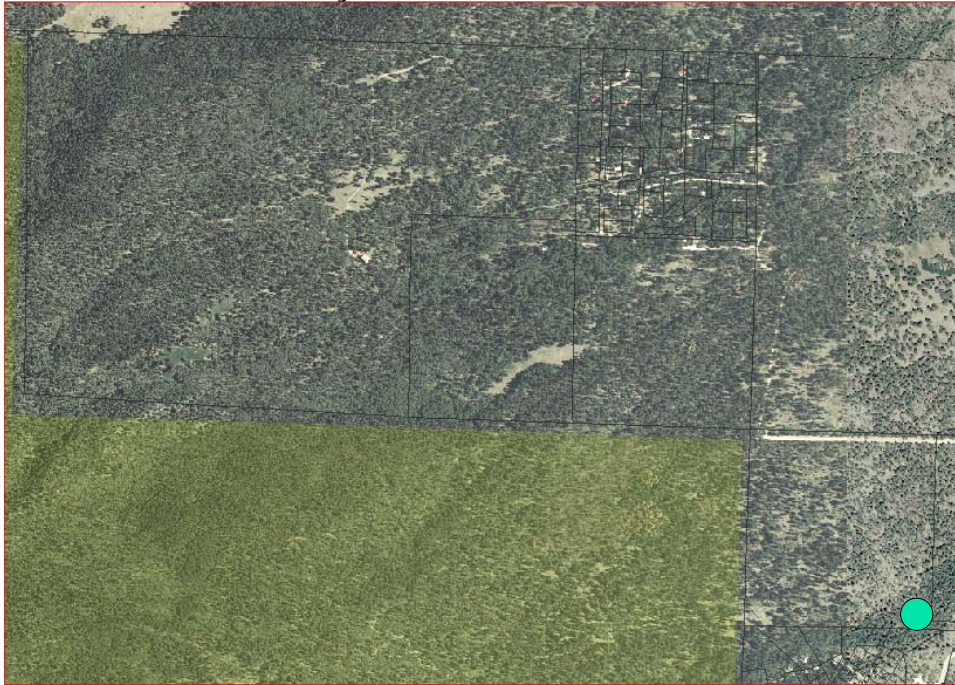
Alvarado Density Areas --- FIRE MODEL



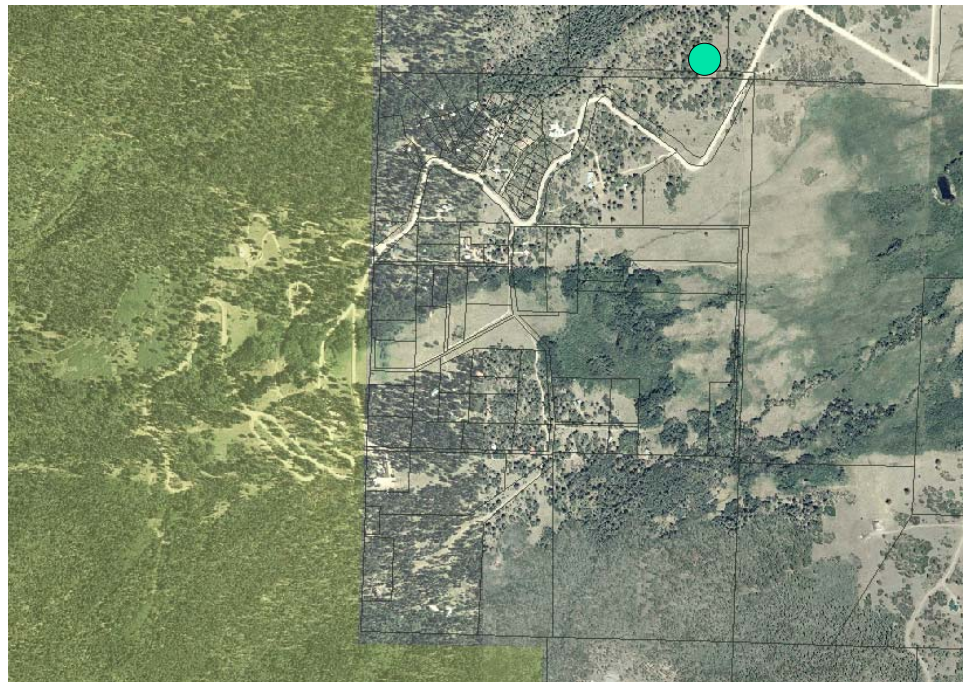


## #5. Alvarado Density Areas

5a. Alvarado Density Area North



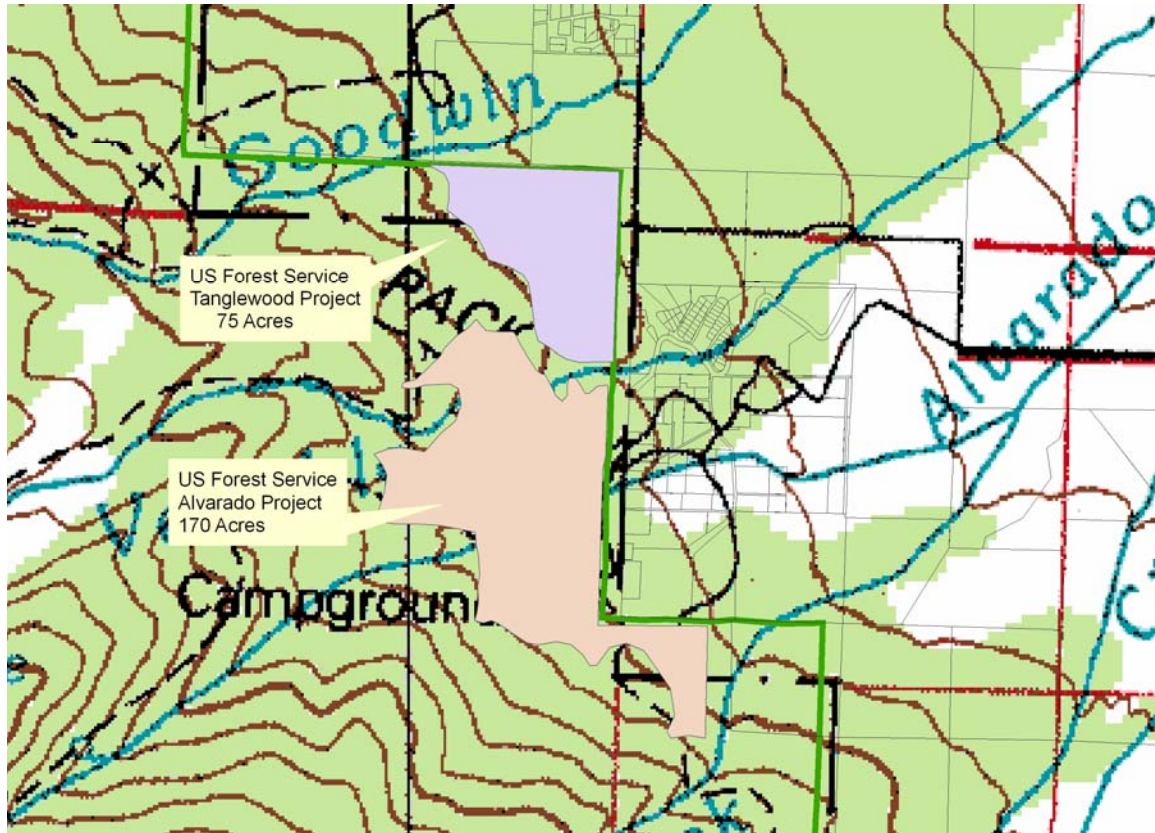
5b. Alvarado Density Area South



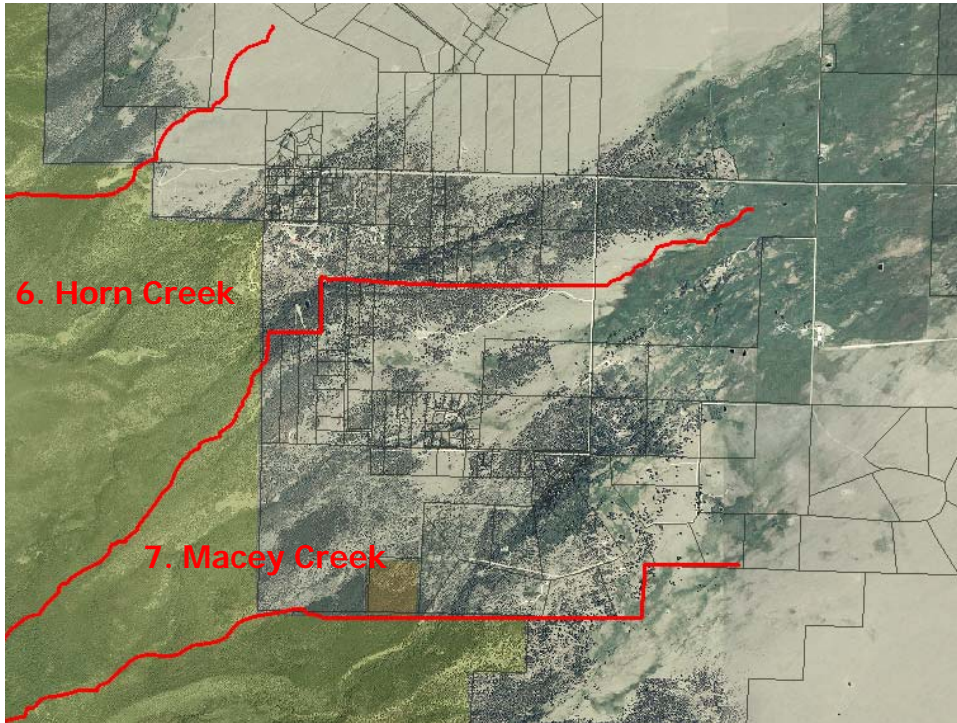
**#5. Alvarado Density Areas include the largest Forest Service campground on the Sangres and several older subdivisions. Interspersed and adjacent meadows are good. Perimeter forest needs reduction, and defensible space, access, and water sources improved. National Forest boundary buffer zones are needed. Wilderness Area is almost on the Rainbow Trail, limiting possible forest treatment areas. A USFS fuel reduction project is under contract, starting as a timber sale.**

**Alvarado USFS Projects**

- a. Tanglewood – part of logging contract with Horn Creek project, 2006, to be followed by slash, brush, and small tree treatments.
- b. Alvarado – in planning stages.

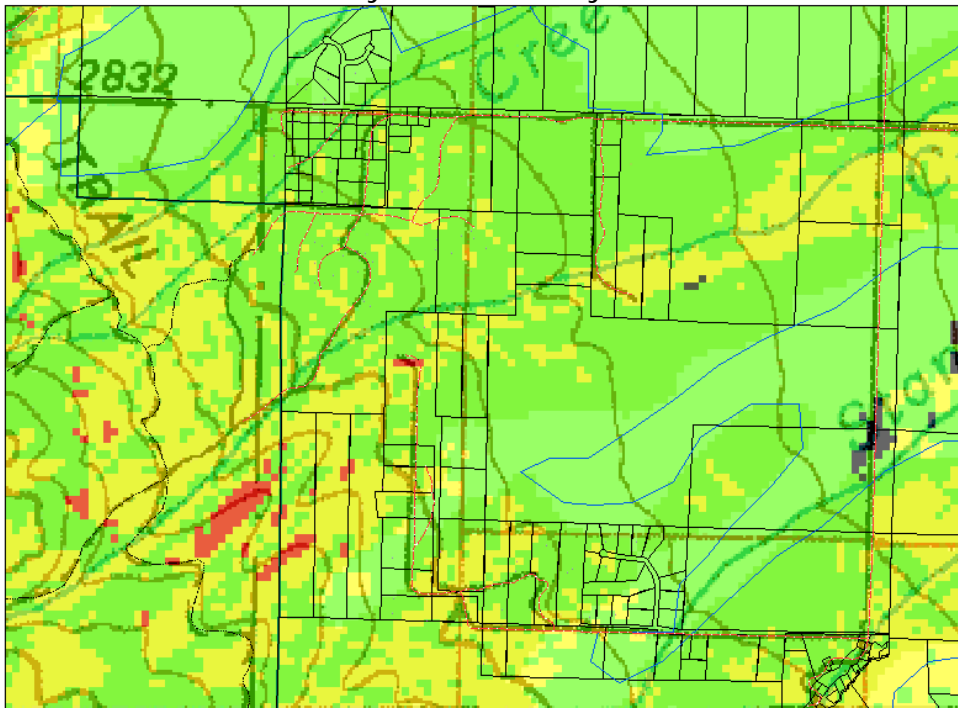






**#6. Horn Creek and #7. Macey Creek aerial photo**

Horn Creek and Macey Creek Density Areas – FIRE MODEL

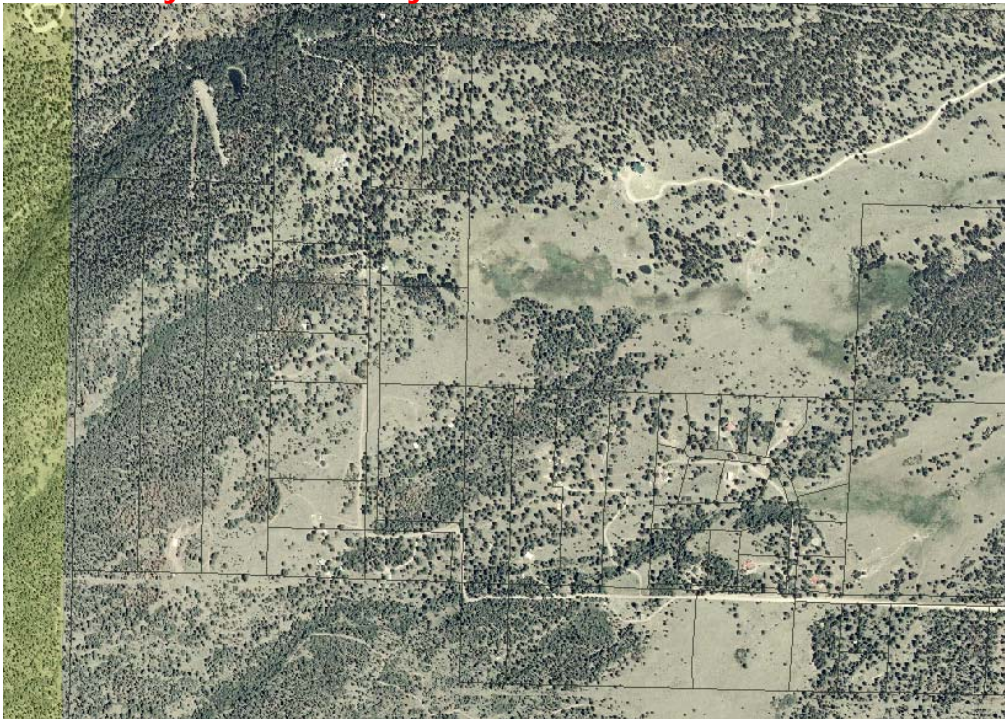




### 6a. Horn Creek Density Area



### 7a. Macey Creek Density Area

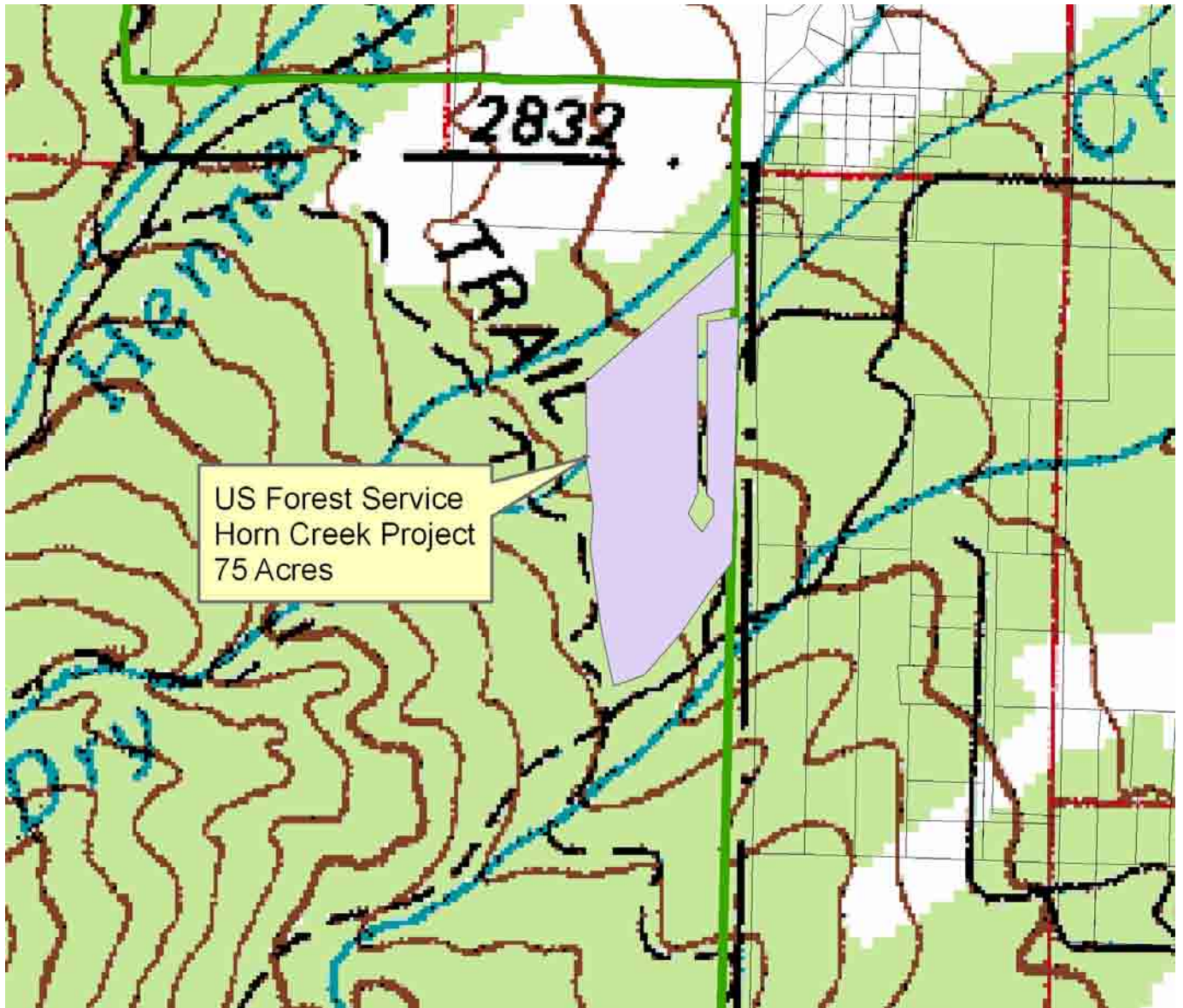


**#6. Horn Creek and #7. Macey Creek Density Areas may be considered as one Landscape Neighborhood. Escape routes between the two need development for loops. Meadows are good firebreaks, but dense tree areas are extreme hazard. Water source is developed at Horn Creek camp (a very large community-value conference center and lodge), but other ponds need access and improvement. Main powerline is overhead and needs protection. National Forest buffer zone needed. A USFS fuel reduction project is under contract at Horn Creek Trailhead.**

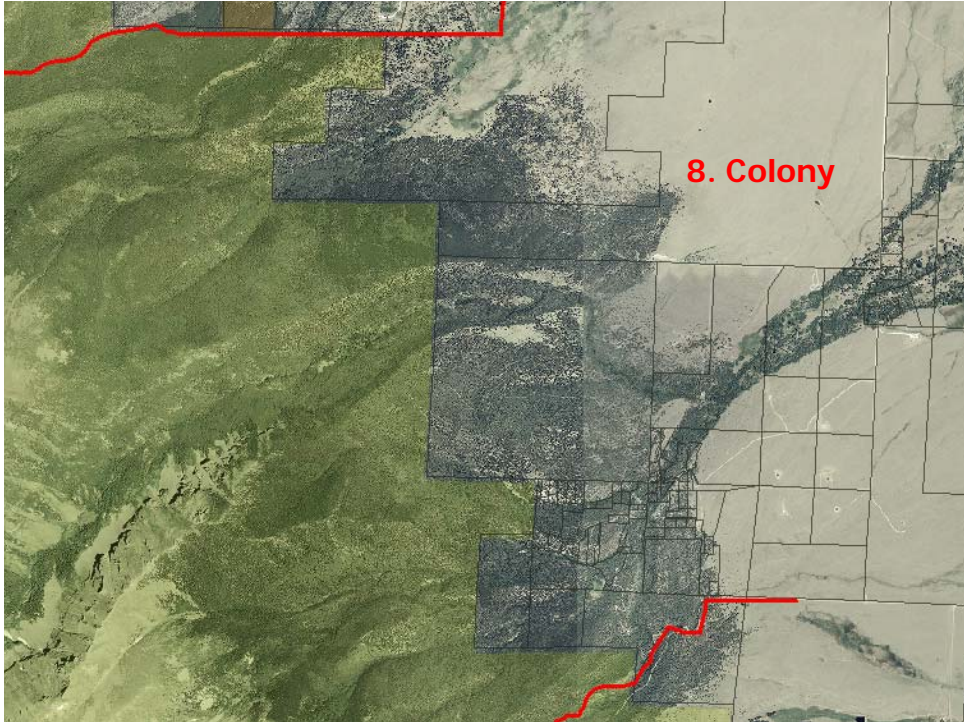


**HORN CREEK— USFS PROJECT AREA**

- a. logging part of operation contracted in 2006
- b. to be followed by slash, brush, and small tree treatments

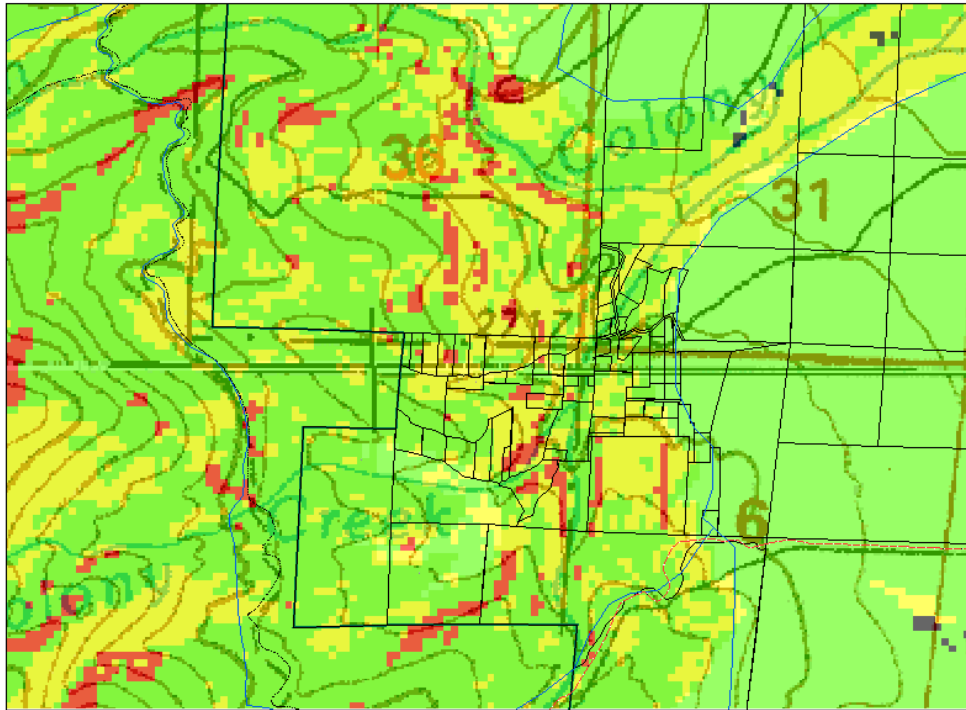






**#8. Colony aerial photo**

Colony Density Area --- FIRE MODEL

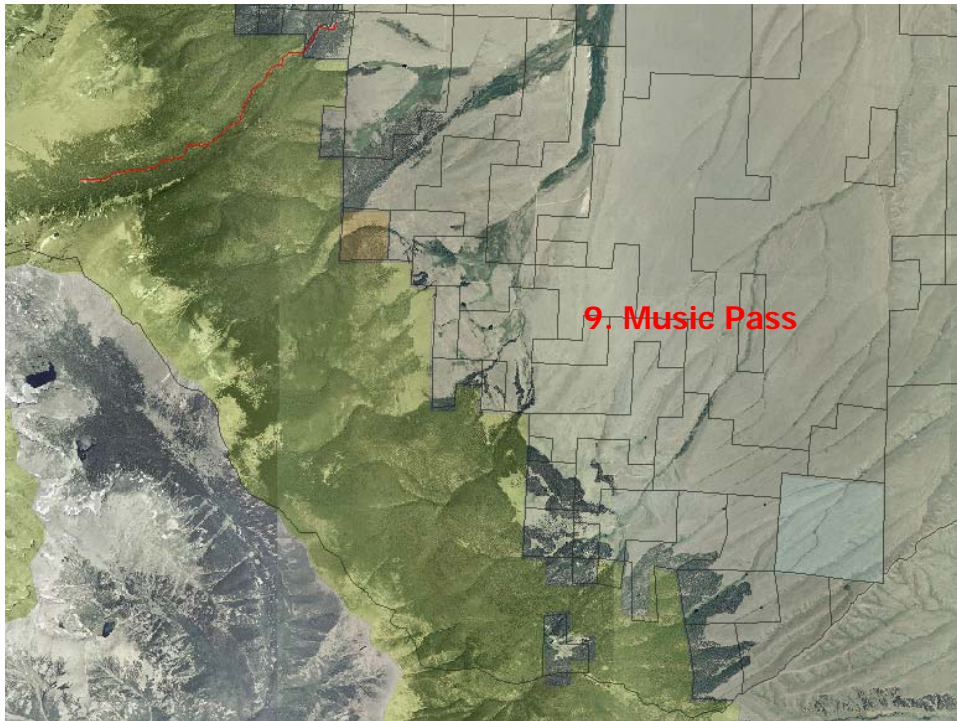


## 8a. Colony Density Area



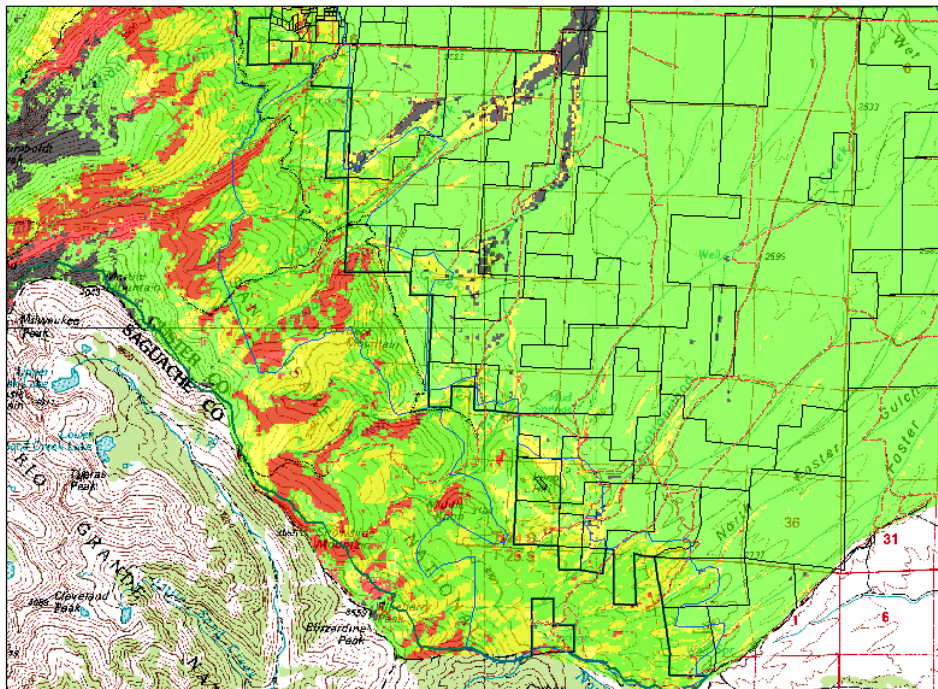
**#8. Colony Density Area has steep roads, small lots, older cabins, dense forest, few meadows or firebreaks, no developed water sources. Cabins are hidden in the aerial photo, showing defensible space is needed. Hazard rating is very high. This is a very difficult area to protect from wildfire. Escape routes need development, identification, and agreements with owners to the north and south.**





**#9. Music Pass aerial photo**

Music Pass area --- FIRE MODEL



**#9. Music Pass does not have a high-density parcel area, is remote, has large meadows extending into National Forest. Red zones are not near many structures. Hazard Rating is low.**



**Music Pass USFS Project Area (Grape Creek)**

**a. In planning and scheduling stages. Dead tree concentrations due to mountain pine beetle and other insect/ disease problems.**

