



**Official Ballot for Republican Party  
Custer County Primary Election  
Tuesday, June 30, 2020**

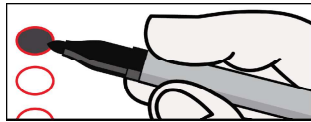
*Kelley S. Campen*

Ballot Type: REP

Clerk and Recorder

- !** Return only one ballot. If your mail ballot packet contains ballots for both the Democratic and Republican Parties, mark and return only one ballot, and destroy the other. If you mark and return both party ballots, neither will count.
- !** Please vote your mail ballot. Due to COVID-19, help us make this a safe election for everyone by returning this ballot via mail or drop box.

**Instructions**



To vote for a named candidate, completely fill in the oval to the left of your choice. Use blue or black ink.



To make a correction, draw a bold line through the oval and candidate name marked by mistake. Then, completely fill in the oval next to the correct name.

**WARNING:** Any person who, by use of force or other means, unduly influences an eligible elector to vote in any particular manner or to refrain from voting, or who falsely makes, alters, forges or counterfeits any mail ballot before or after it has been cast, or who destroys, defaces, mutilates, or tampers with a ballot is subject, upon conviction, to imprisonment, or to a fine, or both. Section 1-7.5-107(3)(b), C.R.S.

Federal Offices	State Offices	County Offices
<b>United States Senator</b> (Vote for One) <input type="radio"/> Cory Gardner	<b>State Board of Education Member - Congressional District 3</b> (Vote for One) <input type="radio"/> Joyce Rankin	<b>County Commissioner - District 2</b> (Vote for One) <input type="radio"/> Kevin V. Day
<b>Representative to the 117th United States Congress - District 3</b> (Vote for One) <input type="radio"/> Lauren Boebert <input type="radio"/> Scott R. Tipton	<b>State Senator - District 35</b> (Vote for One) <input type="radio"/> Cleave Simpson	<b>County Commissioner - District 3</b> (Vote for One) <input type="radio"/> Tommy G. Flower
	<b>State Representative - District 60</b> (Vote for One) <input type="radio"/> Ron Hanks	
	<b>District Attorney - 11th Judicial District</b> (Vote for One) <input type="radio"/> Linda Stanley <input type="radio"/> Thom K. LeDoux	

+

**This side has been intentionally left blank.**

SAMPLE

